

OPTILOCK

Protection for glass sliding doors



FEATURES AND BENEFITS OF THE PRODUCT

- Mechanical and electronic protection for glass sliding doors of up to 8 mm in thickness. The distance between the panes should be minimum 7 mm.
- Quick and easy installation by personnel – without using tools, stickers and drilling.
- Automatic locking of the OptiLock – one does not have to remember to lock it using a remote control.
- Universal USER remote control for controlling all cabinets protected by the OptiLocks.
- Long battery life – up to 2 years of using without the necessity to replace it frequently.
- Symmetrical shape – universal for both left and right doors.

CAUTION!

**Before mounting the OptiLock make sure that the USER remote control is programmed with the device!
If the USER remote control is not programmed, one has to act according to the Programming Remotes manual.**

The picture below presents the components needed to install the whole system:

- 1) OptiLock
- 2) protective slat
- 2) USER remote control



Before mounting the protective slat on the pane one has to maximally unwind the winders.



OPTILOCK

Protection for glass sliding doors

An exemplary cabinet with glass sliding doors.



Slide both panes to one side.



Slide the rear pane few centimetres ahead of the front pane.



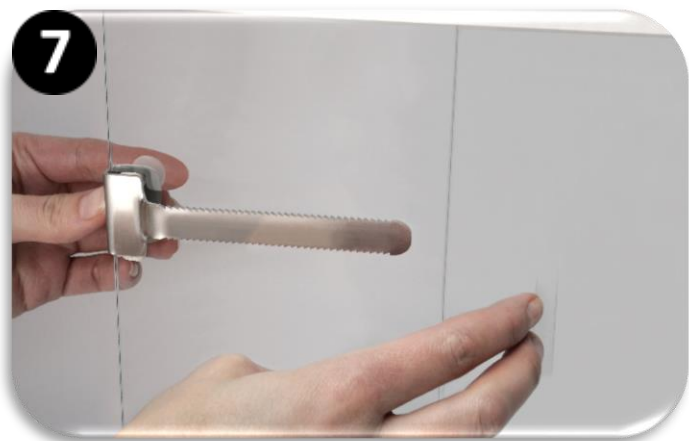
Mount the protective slat on the rear pane at the appropriate height and tighten the winders. The slat should be mounted parallel to the pane.



OPTILOCK

Protection for glass sliding doors

A close-up of the properly mounted slat.



Slide both panes to one side again. After being mounted, the protective slat has to be situated between the panes.



Slide the front pane in such a way as to uncover the protective slat mounted on the rear pane.



Mount the OptiLock on the protective slat, the OptiLock gets automatically locked. The cabinet is protected.



OPTILOCK

Protection for glass sliding doors

A close-up of the properly mounted OptiLock.



In order to open the cabinet one has to push the „Press” button on the OptiLock. The OptiLock will wake itself up from the sleep mode and emit 10 short acoustic signals (every 2 seconds).



During that time, aim the USER remote control at the OptiLock and push the right button (open padlock). This will unlock the OptiLock (you should hear opening of the lock).



Unmount the OptiLock from the protective slat and open the cabinet. The OptiLock will emit 10 short acoustic signals (every 1 second), after which the OptiLock gets automatically locked. After closing the cabinet, mount the OptiLock on the protective slat at the same time automatically protecting the cabinet.

